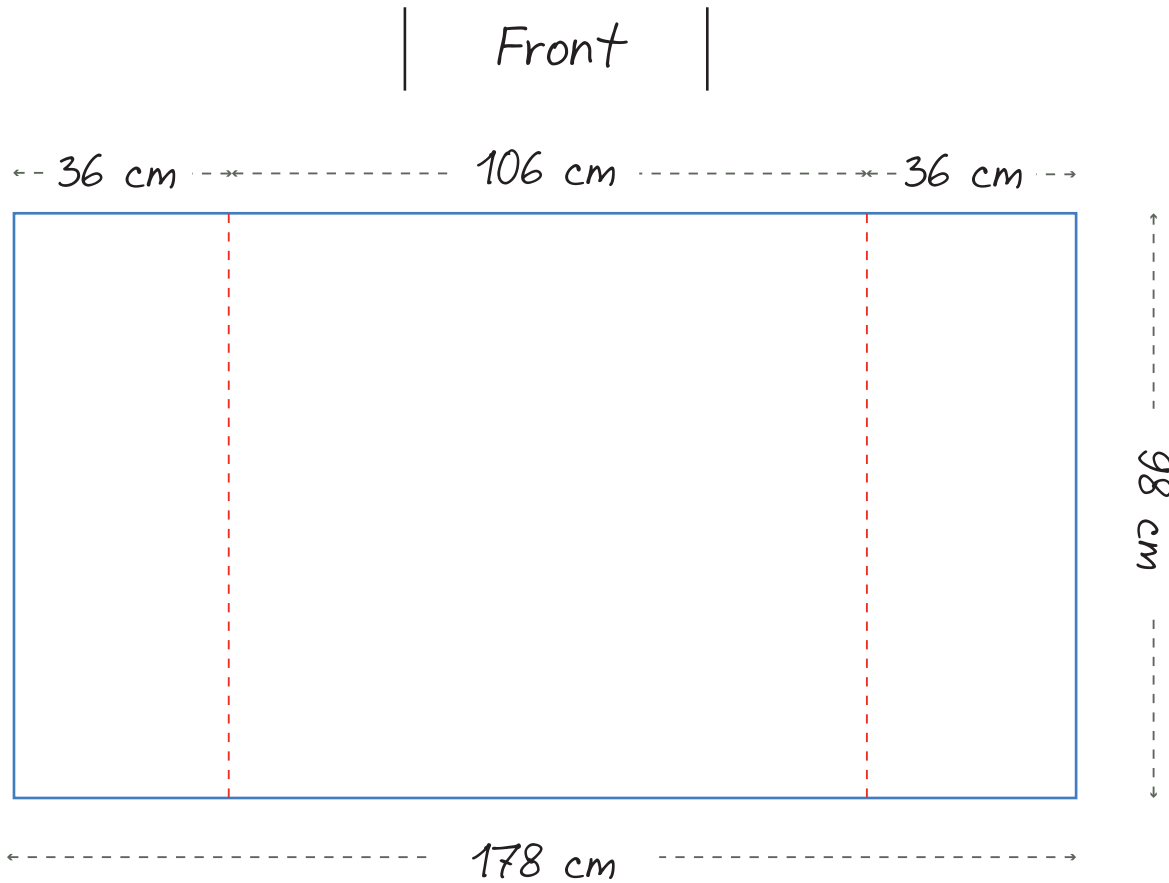


- Blue line = Background
- Red line = Text area
- - - - Gray line = Size
- - - - Sewing line



## Any Pantone colors?

## Have you...?

- Used CMYK colors?
- Vectorized your text?
- Used good quality images?  
Change the size of the your artwork to the real-life size, then scale to 100%. If the image is still clear, you're good to go :)  
... or just use vector file.
- Embedded your images?
- Saved your file as .pdf/.ai?  
(preferred)

