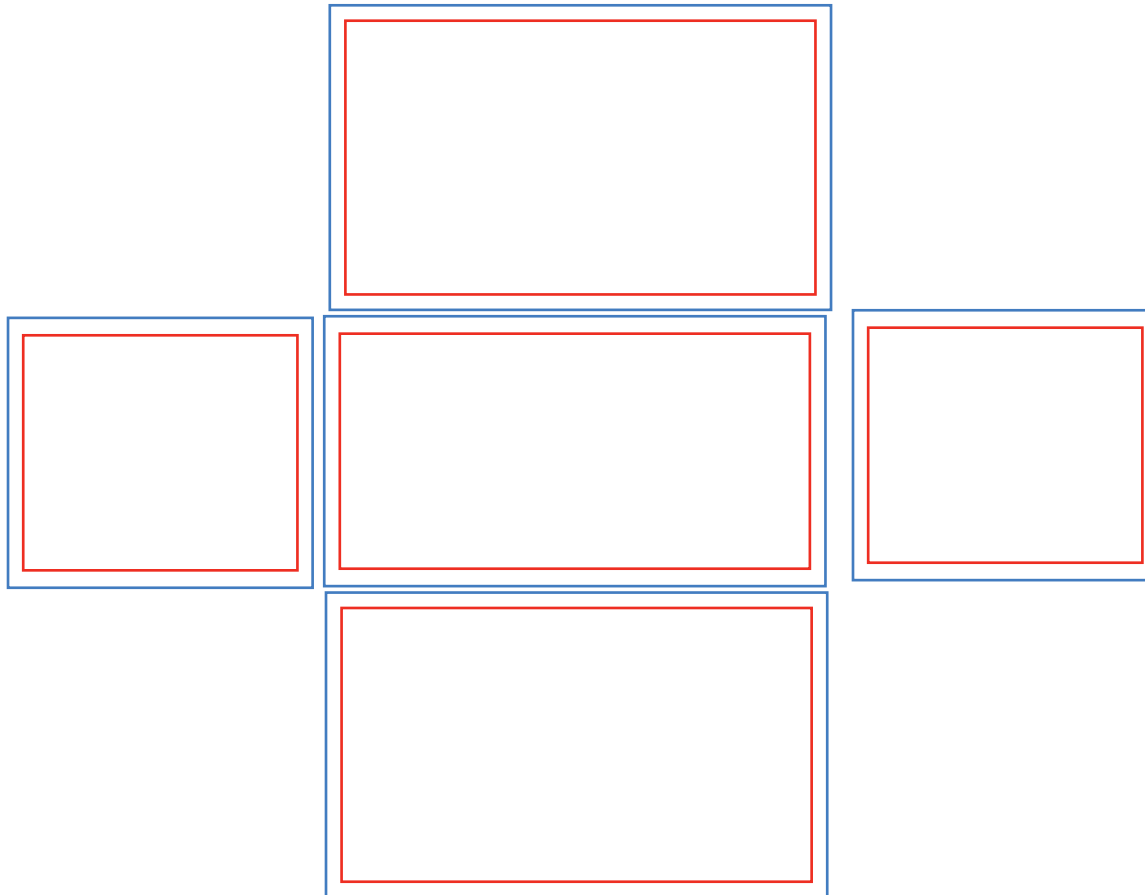


# 4ft Fitted Table Cover

— Blue line = Background

— Red line = Text area

- - - Gray line = Size



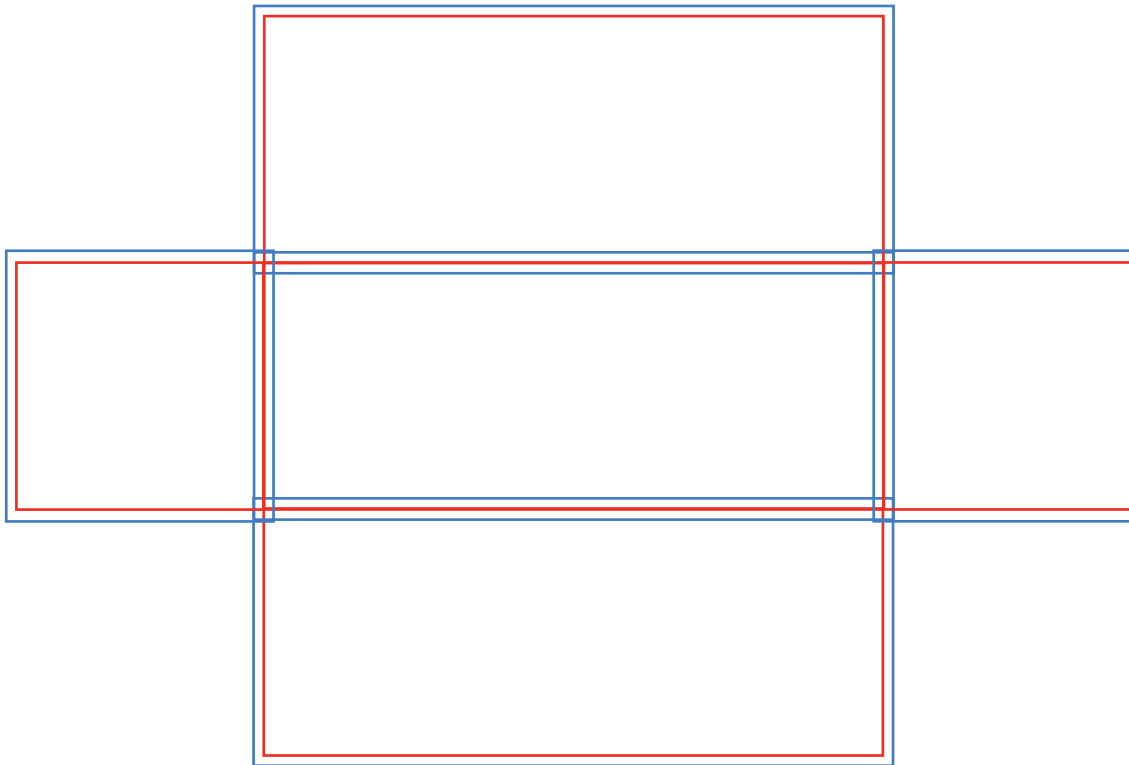
**Any Pantone colors?**

**Have you...?**

- Used CMYK colors?
- Vectorized your text?
- Used good quality images?  
Change the size of the your artwork to the real-life size, then scale to 100%. If the image is still clear, you're good to go :)  
... or just use vector file.
- Embedded your images?
- Saved your file as .pdf/.ai?  
**(preferred)**



# 6ft Fitted Table Cover



— Blue line = Background

— Red line = Text area

- - - Gray line = Size

## Any Pantone colors?

## Have you...?

- Used CMYK colors?
- Vectorized your text?
- Used good quality images?  
Change the size of the your artwork to the real-life size, then scale to 100%. If the image is still clear, you're good to go :)  
... or just use vector file.
- Embedded your images?
- Saved your file as .pdf/.ai?  
**(preferred)**

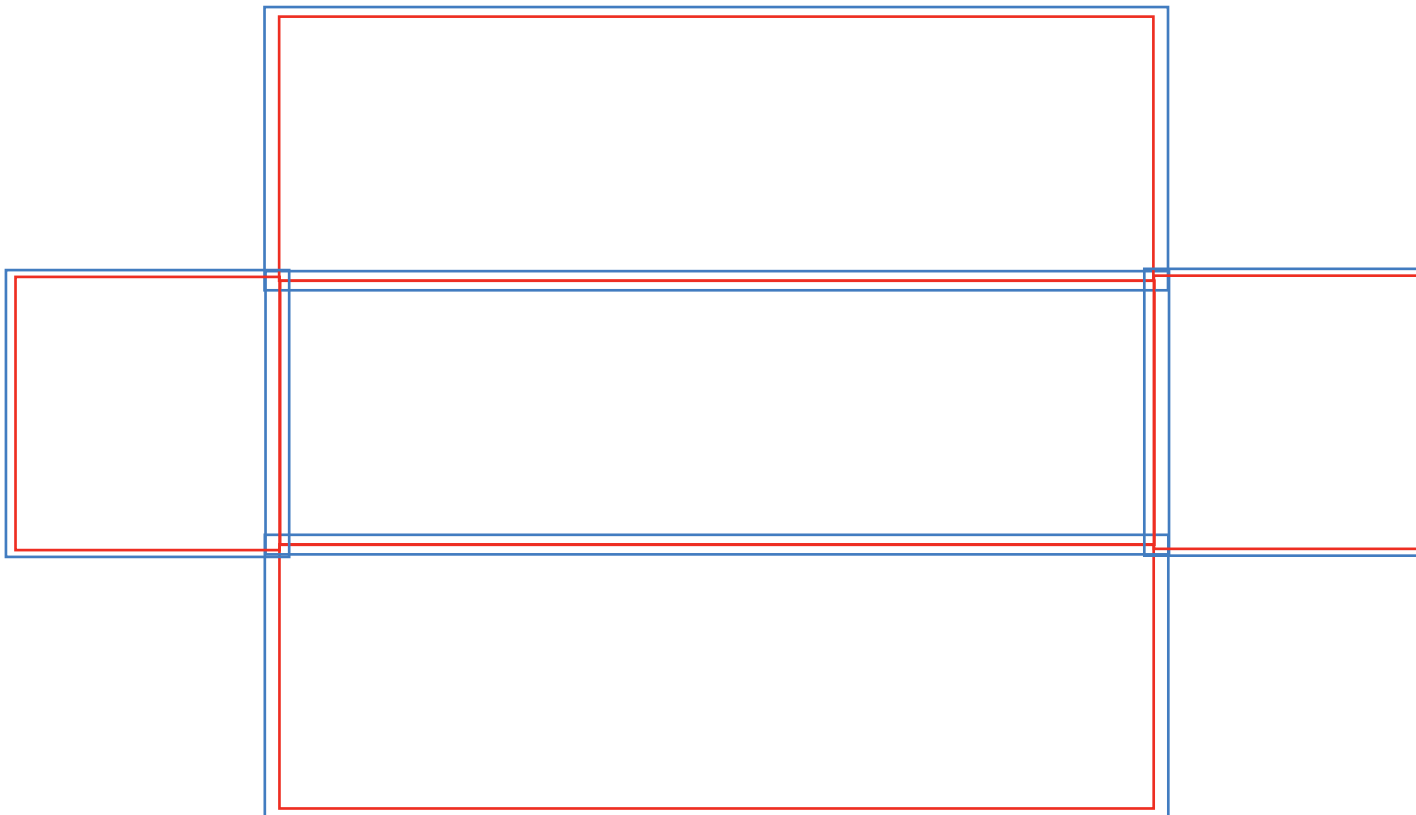


# 8ft Fitted Table Cover

— Blue line = Background

— Red line = Text area

- - - - Gray line = Size



## Any Pantone colors?

## Have you...?

- Used CMYK colors?
- Vectorized your text?
- Used good quality images?  
Change the size of the your artwork to the real-life size, then scale to 100%. If the image is still clear, you're good to go :) ... or just use vector file.
- Embedded your images?
- Saved your file as .pdf/.ai?  
**(preferred)**

